

IN THE DISTRICT COURT OF THE FIFTH JUDICIAL DISTRICT OF THE
STATE OF IDAHO, IN AND FOR THE COUNTY OF TWIN FALLS

In Re CSRBA) PARTIAL DECREE PURSUANT TO I.R.C.P. 54(b)
Case No. 49576) FOR FEDERAL RESERVED
)
) WATER RIGHT NO. 94-09532A

NAME AND ADDRESS: UNITED STATES OF AMERICA ACTING THROUGH
USDA FOREST SERVICE
550 W FORT ST MSC 033
BOISE ID 83724

SOURCE: See Attachment 1, Column A TRIBUTARY: See Attachment 1, Column B

Sources are located on National Forest System Land in the Steamboat Creek subwatershed (HUC12 170103010703).

QUANTITY: The amount of water necessary to control and suppress forest fires.

PRIORITY DATE: 11/06/1906

POINT OF DIVERSION: See Attachment 1, Columns C through G

PURPOSE AND PERIOD OF USE:

<u>PURPOSE OF USE</u>	<u>PERIOD OF USE</u>
Administrative-Fire Suppression	01/01 - 12/31

PLACE OF USE: National Forests in Idaho and the Kaniksu, Lolo and Kootenai National Forests in Montana.

See Attachment 2.

OTHER PROVISIONS NECESSARY FOR DEFINITION OR ADMINISTRATION OF THIS WATER RIGHT:

This right is limited to the intermittent diversion and use of water for the purpose of suppressing wildfires. This water right shall not be used as a basis to prevent the future appropriation of water.

This partial decree is subject to such general provisions necessary for the definition of the rights or for the efficient administration of the water rights as may be ultimately determined by the Court at a point in time no later than the entry of a final unified decree. Idaho Code § 42-1412(6).

RULE 54(b) CERTIFICATE

With respect to the issues determined by the above partial judgment it is hereby CERTIFIED, in accordance with Rule 54(b), I.R.C.P., that the court has determined that there is no just reason for delay of the entry of a final judgment and that the court has and does hereby direct that the above partial judgment is a final judgment upon which execution may issue and an appeal may be taken as provided by the Idaho Appellate Rules.

Eric J. Wildman
Presiding Judge of the
Coeur d'Alene-Spokane River Adjudication

Attachment 1

	A	B	C	D	E	F	G
001	SOURCE NAME	TO TRIBUTARY	TOWNSHIP	RANGE	SECTION	QQ	SURVEY CODE AND NUMBER
002	Barrymore Creek	Steamboat Creek	50N	02E	01	NENE	L 1
003	Barrymore Creek	Steamboat Creek	50N	02E	01	NENW	L 3
004	Barrymore Creek	Steamboat Creek	50N	02E	01	NESW	
005	Unnamed Stream	Barrymore Creek	50N	02E	01	NESW	
006	Barrymore Creek	Steamboat Creek	50N	02E	01	NWNE	L 2
007	Unnamed Stream	Barrymore Creek	50N	02E	01	NWSE	
008	Barrymore Creek	Steamboat Creek	50N	02E	01	SENW	
009	Indian Creek	Steamboat Creek	50N	02E	01	SESE	
010	Unnamed Stream	Barrymore Creek	50N	02E	01	SESW	
011	Unnamed Stream	Barrymore Creek	50N	02E	01	SESW	
012	Unnamed Stream	Barrymore Creek	50N	02E	01	SWSE	
013	Barrymore Creek	Steamboat Creek	50N	02E	01	SWSW	
014	Unnamed Stream	Barrymore Creek	50N	02E	01	SWSW	
015	Unnamed Stream	Can Creek	50N	02E	02	NENE	L 1
016	Unnamed Stream	Can Creek	50N	02E	02	NWSE	
017	Can Creek	Steamboat Creek	50N	02E	02	NWSW	
018	Unnamed Stream	Can Creek	50N	02E	02	NWSW	
019	Unnamed Stream	Can Creek	50N	02E	02	SENW	
020	Unnamed Stream	Can Creek	50N	02E	02	SWNE	
021	Unnamed Stream	West Fork Steamboat Creek	50N	02E	04	NENW	L 3
022	Unnamed Stream	West Fork Steamboat Creek	50N	02E	04	NENW	L 3
023	Unnamed Stream	West Fork Steamboat Creek	50N	02E	04	NWNW	L 4
024	Unnamed Stream	West Fork Steamboat Creek	50N	02E	04	NWSW	
025	Unnamed Stream	West Fork Steamboat Creek	50N	02E	04	SENW	
026	Unnamed Stream	West Fork Steamboat Creek	50N	02E	04	SESW	
027	Unnamed Stream	West Fork Steamboat Creek	50N	02E	04	SWNW	
028	Unnamed Stream	West Fork Steamboat Creek	50N	02E	04	SWNW	
029	Unnamed Stream	West Fork Steamboat Creek	50N	02E	04	SWSW	
030	Unnamed Stream	West Fork Steamboat Creek	50N	02E	04	SWSW	
031	Unnamed Stream	West Fork Steamboat Creek	50N	02E	04	SWSW	
032	Unnamed Stream	North Fork Coeur d'Alene River	50N	02E	05		
033	Unnamed Stream	North Fork Coeur d'Alene River	50N	02E	05		
034	Unnamed Stream	North Fork Coeur d'Alene River	50N	02E	05		
035	Unnamed Stream	North Fork Coeur d'Alene River	50N	02E	05		
036	Unnamed Stream	North Fork Coeur d'Alene River	50N	02E	05		
037	Unnamed Stream	North Fork Coeur d'Alene River	50N	02E	05		
038	Unnamed Stream	West Fork Steamboat Creek	50N	02E	05		
039	Unnamed Stream	West Fork Steamboat Creek	50N	02E	05		
040	Unnamed Stream	North Fork Coeur d'Alene River	50N	02E	06		

Attachment 1

	A	B	C	D	E	F	G
001	SOURCE NAME	TO TRIBUTARY	TOWNSHIP	RANGE	SECTION	QQ	SURVEY CODE AND NUMBER
041	Unnamed Stream	North Fork Coeur d'Alene River	50N	02E	06		
042	Unnamed Stream	North Fork Coeur d'Alene River	50N	02E	06		
043	Unnamed Stream	North Fork Coeur d'Alene River	50N	02E	06		
044	Unnamed Stream	Big Bob Creek	50N	02E	09	NENE	
045	Unnamed Stream	West Fork Steamboat Creek	50N	02E	09	NENW	
046	Big Bob Creek	Steamboat Creek	50N	02E	09	NESE	
047	Unnamed Stream	Big Bob Creek	50N	02E	09	NESE	
048	Big Bob Creek	Steamboat Creek	50N	02E	09	NWSE	
049	Unnamed Stream	West Fork Steamboat Creek	50N	02E	09	NWSW	
050	Unnamed Stream	Big Bob Creek	50N	02E	09	SENE	
051	Unnamed Stream	Big Bob Creek	50N	02E	09	SENE	
052	Unnamed Stream	Big Bob Creek	50N	02E	09	SWNE	
053	Unnamed Stream	West Fork Steamboat Creek	50N	02E	09	SWNW	
054	Unnamed Stream	Omaha Creek	50N	02E	10	SESE	
055	Unnamed Stream	Omaha Creek	50N	02E	10	SWSE	
056	Steamboat Creek	North Fork Coeur d'Alene River	50N	02E	11	NENW	
057	Unnamed Stream	Steamboat Creek	50N	02E	11	NENW	
058	Unnamed Stream	Steamboat Creek	50N	02E	11	NENW	
059	Barrymore Creek	Steamboat Creek	50N	02E	11	NESE	
060	Barrymore Creek	Steamboat Creek	50N	02E	11	NWSE	
061	Steamboat Creek	North Fork Coeur d'Alene River	50N	02E	11	NWSE	
062	Barrymore Creek	Steamboat Creek	50N	02E	11	SENE	
063	Unnamed Stream	Barrymore Creek	50N	02E	11	SENE	
064	Unnamed Stream	Steamboat Creek	50N	02E	11	SESE	
065	Steamboat Creek	North Fork Coeur d'Alene River	50N	02E	11	SWNE	
066	Steamboat Creek	North Fork Coeur d'Alene River	50N	02E	11	SWSE	
067	Unnamed Stream	Steamboat Creek	50N	02E	11	SWSE	
068	Unnamed Stream	Omaha Creek	50N	02E	11	SWSW	
069	Unnamed Stream	Steamboat Creek	50N	02E	11	SWSW	
070	Barrymore Creek	Steamboat Creek	50N	02E	12		
071	Indian Creek	Steamboat Creek	50N	02E	12		
072	Unnamed Stream	Barrymore Creek	50N	02E	12		
073	Unnamed Stream	Barrymore Creek	50N	02E	12		
074	Unnamed Stream	Indian Creek	50N	02E	12		
075	Unnamed Stream	Indian Creek	50N	02E	12		
076	Unnamed Stream	Steamboat Creek	50N	02E	12		
077	Eighty Day Creek	Steamboat Creek	50N	02E	13	NENE	
078	Unnamed Stream	Indian Creek	50N	02E	13	NENE	
079	Indian Creek	Steamboat Creek	50N	02E	13	NENW	

Attachment 1

	A	B	C	D	E	F	G
001	SOURCE NAME	TO TRIBUTARY	TOWNSHIP	RANGE	SECTION	QQ	SURVEY CODE AND NUMBER
080	Unnamed Stream	Indian Creek	50N	02E	13	NENW	
081	Unnamed Stream	Steamboat Creek	50N	02E	13	NESW	
082	Unnamed Stream	Indian Creek	50N	02E	13	NWNE	
083	Indian Creek	Steamboat Creek	50N	02E	13	NWNW	
084	Unnamed Stream	Indian Creek	50N	02E	13	NWNW	
085	Unnamed Stream	Steamboat Creek	50N	02E	13	NWSW	
086	Unnamed Stream	Indian Creek	50N	02E	13	SENW	
087	Eighty Day Creek	Steamboat Creek	50N	02E	13	SESW	
088	Eighty Day Creek	Steamboat Creek	50N	02E	13	SWNE	
089	Unnamed Stream	Indian Creek	50N	02E	13	SWNE	
090	Indian Creek	Steamboat Creek	50N	02E	13	SWNW	
091	Steamboat Creek	North Fork Coeur d'Alene River	50N	02E	13	SWNW	
092	Unnamed Stream	Indian Creek	50N	02E	13	SWNW	
093	Eighty Day Creek	Steamboat Creek	50N	02E	13	SWSE	
094	Steamboat Creek	North Fork Coeur d'Alene River	50N	02E	14	NENE	
095	Unnamed Stream	Steamboat Creek	50N	02E	14	NENE	
096	Steamboat Creek	North Fork Coeur d'Alene River	50N	02E	14	NESE	
097	Unnamed Stream	Steamboat Creek	50N	02E	14	NESE	
098	Unnamed Stream	Steamboat Creek	50N	02E	14	NESE	
099	Unnamed Stream	Omaha Creek	50N	02E	14	NWNW	
100	Indian Creek	Steamboat Creek	50N	02E	14	SENE	
101	Omaha Creek	Steamboat Creek	50N	02E	14	SENE	
102	Steamboat Creek	North Fork Coeur d'Alene River	50N	02E	14	SENE	
103	Omaha Creek	Steamboat Creek	50N	02E	14	SENW	
104	Unnamed Stream	Omaha Creek	50N	02E	14	SENW	
105	Omaha Creek	Steamboat Creek	50N	02E	14	SWNE	
106	Unnamed Stream	Omaha Creek	50N	02E	14	SWNE	
107	Omaha Creek	Steamboat Creek	50N	02E	14	SWNW	
108	Unnamed Stream	Omaha Creek	50N	02E	15	NENW	
109	Unnamed Stream	Omaha Creek	50N	02E	15	NESW	
110	Unnamed Stream	Omaha Creek	50N	02E	15	NWNE	
111	Omaha Creek	Steamboat Creek	50N	02E	15	SENE	
112	Unnamed Stream	Omaha Creek	50N	02E	15	SENE	
113	Omaha Creek	Steamboat Creek	50N	02E	15	SENW	
114	Omaha Creek	Steamboat Creek	50N	02E	15	SWNE	
115	Unnamed Stream	Omaha Creek	50N	02E	15	SWNE	
116	Unnamed Stream	Omaha Creek	50N	02E	15	SWNE	
117	Omaha Creek	Steamboat Creek	50N	02E	15	SWNW	
118	Steamboat Creek	North Fork Coeur d'Alene River	50N	02E	23		

Attachment 1

	A	B	C	D	E	F	G
001	SOURCE NAME	TO TRIBUTARY	TOWNSHIP	RANGE	SECTION	QQ	SURVEY CODE AND NUMBER
119	Indian Creek	Steamboat Creek	50N	03E	05		
120	Unnamed Stream	Indian Creek	50N	03E	05		
121	Unnamed Stream	Indian Creek	50N	03E	05		
122	Barrymore Creek	Steamboat Creek	50N	03E	06		
123	Indian Creek	Steamboat Creek	50N	03E	06		
124	Unnamed Stream	Indian Creek	50N	03E	06		
125	Eighty Day Creek	Steamboat Creek	50N	03E	07		
126	Unnamed Stream	Eighty Day Creek	50N	03E	07		
127	Unnamed Stream	Indian Creek	50N	03E	07		
128	Unnamed Stream	Indian Creek	50N	03E	07		
129	Eighty Day Creek	Steamboat Creek	50N	03E	18		
130	Unnamed Stream	Eighty Day Creek	50N	03E	18		
131	Unnamed Stream	Comfy Creek	51N	01E	24		
132	Unnamed Stream	North Fork Coeur d'Alene River	51N	01E	25		
133	Unnamed Stream	North Fork Coeur d'Alene River	51N	01E	25		
134	Unnamed Stream	North Fork Coeur d'Alene River	51N	01E	25		
135	Unnamed Stream	West Fork Steamboat Creek	51N	01E	25		
136	Unnamed Stream	West Fork Steamboat Creek	51N	01E	25		
137	Unnamed Stream	West Fork Steamboat Creek	51N	01E	25		
138	West Fork Steamboat Creek	Steamboat Creek	51N	01E	25		
139	Unnamed Stream	North Fork Coeur d'Alene River	51N	01E	35		
140	Unnamed Stream	North Fork Coeur d'Alene River	51N	01E	36		
141	Unnamed Stream	North Fork Coeur d'Alene River	51N	01E	36		
142	Unnamed Stream	North Fork Coeur d'Alene River	51N	01E	36		
143	Unnamed Stream	North Fork Coeur d'Alene River	51N	01E	36		
144	Unnamed Stream	North Fork Coeur d'Alene River	51N	01E	36		
145	West Fork Steamboat Creek	Steamboat Creek	51N	01E	36		
146	Autumn Creek	East Fork Steamboat Creek	51N	02E	09		
147	Martin Creek	East Fork Steamboat Creek	51N	02E	09		
148	Unnamed Stream	Autumn Creek	51N	02E	09		
149	Clay Creek	East Fork Steamboat Creek	51N	02E	10		
150	Unnamed Stream	Autumn Creek	51N	02E	10		
151	Little East Fork Steamboat Creek	East Fork Steamboat Creek	51N	02E	14		
152	Unnamed Stream	Clay Creek	51N	02E	14		
153	Autumn Creek	East Fork Steamboat Creek	51N	02E	15		
154	Clay Creek	East Fork Steamboat Creek	51N	02E	15		
155	East Fork Steamboat Creek	Steamboat Creek	51N	02E	15		
156	Unnamed Stream	Autumn Creek	51N	02E	15		
157	Unnamed Stream	Clay Creek	51N	02E	15		

Attachment 1

	A	B	C	D	E	F	G
001	SOURCE NAME	TO TRIBUTARY	TOWNSHIP	RANGE	SECTION	QQ	SURVEY CODE AND NUMBER
158	Unnamed Stream	Clay Creek	51N	02E	15		
159	Autumn Creek	East Fork Steamboat Creek	51N	02E	16		
160	East Fork Steamboat Creek	Steamboat Creek	51N	02E	16		
161	Martin Creek	East Fork Steamboat Creek	51N	02E	16		
162	Unnamed Stream	Cabin Creek	51N	02E	16		
163	Cabin Creek	East Fork Steamboat Creek	51N	02E	17		
164	Unnamed Stream	Comfy Creek	51N	02E	17		
165	Unnamed Stream	Comfy Creek	51N	02E	18		
166	Comfy Creek	West Fork Steamboat Creek	51N	02E	19		
167	Unnamed Stream	Comfy Creek	51N	02E	19		
168	Unnamed Stream	Comfy Creek	51N	02E	19		
169	Unnamed Stream	Comfy Creek	51N	02E	19		
170	Unnamed Stream	Comfy Creek	51N	02E	19		
171	Unnamed Stream	Comfy Creek	51N	02E	19		
172	Unnamed Stream	Comfy Creek	51N	02E	19		
173	Unnamed Stream	Comfy Creek	51N	02E	19		
174	Unnamed Stream	Comfy Creek	51N	02E	19		
175	Cabin Creek	East Fork Steamboat Creek	51N	02E	20		
176	Comfy Creek	West Fork Steamboat Creek	51N	02E	20		
177	Unnamed Stream	Cabin Creek	51N	02E	20		
178	Unnamed Stream	Cabin Creek	51N	02E	20		
179	Unnamed Stream	Comfy Creek	51N	02E	20		
180	Unnamed Stream	Comfy Creek	51N	02E	20		
181	Unnamed Stream	Comfy Creek	51N	02E	20		
182	Unnamed Stream	Comfy Creek	51N	02E	20		
183	Unnamed Stream	Comfy Creek	51N	02E	20		
184	Cabin Creek	East Fork Steamboat Creek	51N	02E	21		
185	Unnamed Stream	Cabin Creek	51N	02E	21		
186	Unnamed Stream	Cabin Creek	51N	02E	21		
187	Unnamed Stream	Cabin Creek	51N	02E	21		
188	Unnamed Stream	Cabin Creek	51N	02E	21		
189	Unnamed Stream	Cabin Creek	51N	02E	21		
190	Unnamed Stream	East Fork Steamboat Creek	51N	02E	21		
191	Clay Creek	East Fork Steamboat Creek	51N	02E	22		
192	East Fork Steamboat Creek	Steamboat Creek	51N	02E	22		
193	Little East Fork Steamboat Creek	East Fork Steamboat Creek	51N	02E	22		
194	Unnamed Stream	East Fork Steamboat Creek	51N	02E	22		
195	Unnamed Stream	East Fork Steamboat Creek	51N	02E	22		
196	Unnamed Stream	East Fork Steamboat Creek	51N	02E	22		

Attachment 1

	A	B	C	D	E	F	G
001	SOURCE NAME	TO TRIBUTARY	TOWNSHIP	RANGE	SECTION	QQ	SURVEY CODE AND NUMBER
197	Little East Fork Steamboat Creek	East Fork Steamboat Creek	51N	02E	23		
198	Unnamed Stream	Little East Fork Steamboat Creek	51N	02E	23		
199	Unnamed Stream	Little East Fork Steamboat Creek	51N	02E	23		
200	Unnamed Stream	Little East Fork Steamboat Creek	51N	02E	23		
201	Unnamed Stream	Little East Fork Steamboat Creek	51N	02E	23		
202	Can Creek	Steamboat Creek	51N	02E	24		
203	Unnamed Stream	Little East Fork Steamboat Creek	51N	02E	24		
204	Unnamed Stream	Little East Fork Steamboat Creek	51N	02E	24		
205	Can Creek	Steamboat Creek	51N	02E	25		
206	Felder Creek	Can Creek	51N	02E	25		
207	Unnamed Stream	Can Creek	51N	02E	25		
208	Unnamed Stream	Can Creek	51N	02E	25		
209	Unnamed Stream	Felder Creek	51N	02E	25		
210	Can Creek	Steamboat Creek	51N	02E	26		
211	Unnamed Stream	Can Creek	51N	02E	26		
212	Unnamed Stream	Can Creek	51N	02E	26		
213	Unnamed Stream	Little East Fork Steamboat Creek	51N	02E	26		
214	East Fork Steamboat Creek	Steamboat Creek	51N	02E	27		
215	Unnamed Stream	Steamboat Creek	51N	02E	27		
216	Little East Fork Steamboat Creek	East Fork Steamboat Creek	51N	02E	27		
217	Unnamed Stream	East Fork Steamboat Creek	51N	02E	27		
218	Unnamed Stream	East Fork Steamboat Creek	51N	02E	27		
219	Unnamed Stream	East Fork Steamboat Creek	51N	02E	27		
220	Unnamed Stream	Little East Fork Steamboat Creek	51N	02E	27		
221	Cabin Creek	East Fork Steamboat Creek	51N	02E	28		
222	East Fork Steamboat Creek	Steamboat Creek	51N	02E	28		
223	Long Tom Creek	East Fork Steamboat Creek	51N	02E	28		
224	Unnamed Stream	East Fork Steamboat Creek	51N	02E	28		
225	Unnamed Stream	Long Tom Creek	51N	02E	28		
226	Unnamed Stream	Long Tom Creek	51N	02E	28		
227	Unnamed Stream	Long Tom Creek	51N	02E	28		
228	Comfy Creek	West Fork Steamboat Creek	51N	02E	29		
229	Unnamed Stream	Comfy Creek	51N	02E	29		
230	Unnamed Stream	Comfy Creek	51N	02E	29		
231	Unnamed Stream	Comfy Creek	51N	02E	29		
232	Unnamed Stream	Comfy Creek	51N	02E	29		
233	Unnamed Stream	North Fork Coeur d'Alene River	51N	02E	29		
234	Betty Creek	West Fork Steamboat Creek	51N	02E	30		
235	Comfy Creek	West Fork Steamboat Creek	51N	02E	30		

Attachment 1




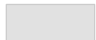

	A	B	C	D	E	F	G
001	SOURCE NAME	TO TRIBUTARY	TOWNSHIP	RANGE	SECTION	QQ	SURVEY CODE AND NUMBER
236	Unnamed Stream	Betty Creek	51N	02E	30		
237	Unnamed Stream	Comfy Creek	51N	02E	30		
238	Unnamed Stream	Comfy Creek	51N	02E	30		
239	Unnamed Stream	Comfy Creek	51N	02E	30		
240	Unnamed Stream	North Fork Coeur d'Alene River	51N	02E	30		
241	Betty Creek	West Fork Steamboat Creek	51N	02E	31		
242	Unnamed Stream	North Fork Coeur d'Alene River	51N	02E	31		
243	Unnamed Stream	North Fork Coeur d'Alene River	51N	02E	31		
244	Unnamed Stream	North Fork Coeur d'Alene River	51N	02E	31		
245	Unnamed Stream	North Fork Coeur d'Alene River	51N	02E	31		
246	West Fork Steamboat Creek	Steamboat Creek	51N	02E	31		
247	Comfy Creek	West Fork Steamboat Creek	51N	02E	32		
248	Timber Creek	West Fork Steamboat Creek	51N	02E	32		
249	Unnamed Stream	North Fork Coeur d'Alene River	51N	02E	32		
250	Unnamed Stream	North Fork Coeur d'Alene River	51N	02E	32		
251	Unnamed Stream	North Fork Coeur d'Alene River	51N	02E	32		
252	West Fork Steamboat Creek	Steamboat Creek	51N	02E	32		
253	Boston Brook	West Fork Steamboat Creek	51N	02E	33		
254	Long Tom Creek	East Fork Steamboat Creek	51N	02E	33		
255	Timber Creek	West Fork Steamboat Creek	51N	02E	33		
256	Unnamed Stream	Boston Brook	51N	02E	33		
257	Unnamed Stream	Boston Brook	51N	02E	33		
258	Unnamed Stream	West Fork Steamboat Creek	51N	02E	33		
259	West Fork Steamboat Creek	Steamboat Creek	51N	02E	33		
260	East Fork Steamboat Creek	Steamboat Creek	51N	02E	34		
261	Unnamed Stream	Steamboat Creek	51N	02E	34		
262	Long Tom Creek	East Fork Steamboat Creek	51N	02E	34		
263	Unnamed Stream	East Fork Steamboat Creek	51N	02E	34		
264	Unnamed Stream	Unnamed Stream	51N	02E	34		
265	Unnamed Stream	Steamboat Creek	51N	02E	34		
266	Can Creek	Steamboat Creek	51N	02E	35		
267	Unnamed Stream	Can Creek	51N	02E	35		
268	Unnamed Stream	Can Creek	51N	02E	35		
269	Unnamed Stream	Can Creek	51N	02E	35		
270	Barrymore Creek	Steamboat Creek	51N	02E	36		
271	Unnamed Stream	Barrymore Creek	51N	02E	36		
272	Unnamed Stream	Barrymore Creek	51N	02E	36		
273	Unnamed Stream	Can Creek	51N	02E	36		
274	Unnamed Stream	Felder Creek	51N	02E	36		

Attachment 1

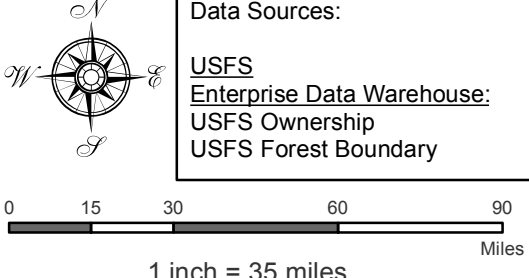
	A	B	C	D	E	F	G
001	SOURCE NAME	TO TRIBUTARY	TOWNSHIP	RANGE	SECTION	QQ	SURVEY CODE AND NUMBER
275	Barrymore Creek	Steamboat Creek	51N	03E	30		
276	Felder Creek	Can Creek	51N	03E	30		
277	Barrymore Creek	Steamboat Creek	51N	03E	31		
278	Unnamed Stream	Barrymore Creek	51N	03E	31		
279	Unnamed Stream	Barrymore Creek	51N	03E	31		
280	Unnamed Stream	Barrymore Creek	51N	03E	31		
281	Unnamed Stream	Barrymore Creek	51N	03E	31		
282	Unnamed Stream	Barrymore Creek	51N	03E	32		
283	McDonald Spring	Comfy Creek	51N	01E	24	NENE	

Attachment 2
 Place of Use Map Fire Suppression - Water Right No. 94-09532A
 National Forests in Idaho and the Kaniksu, Lolo and Kootenai NF in Montana

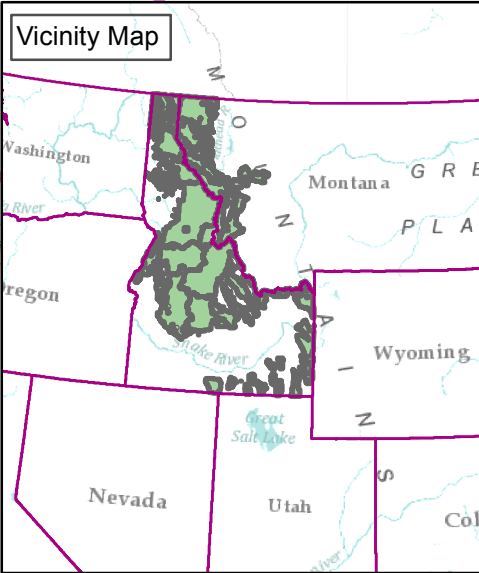
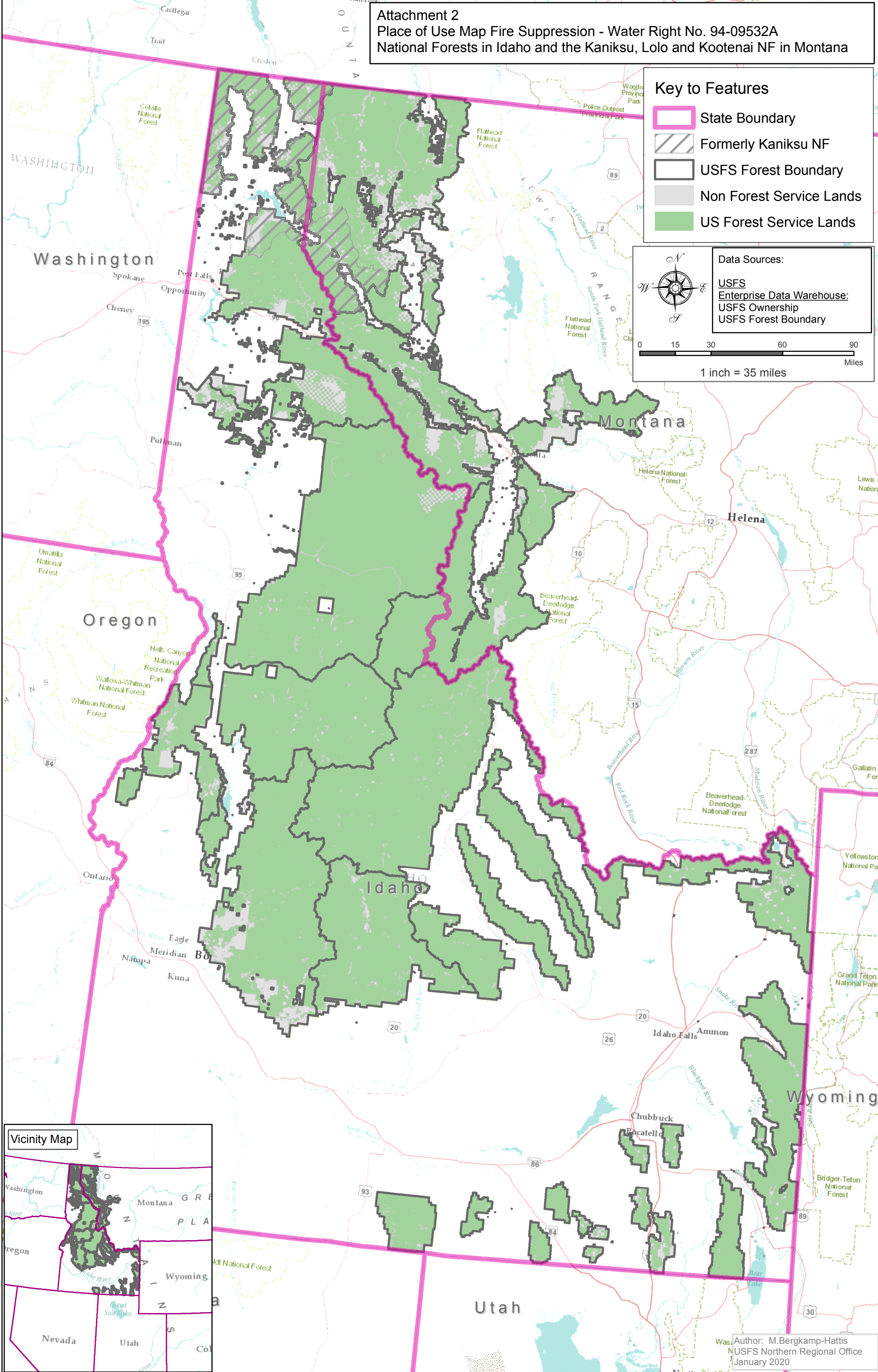
Key to Features

-  State Boundary
-  Formerly Kaniksu NF
-  USFS Forest Boundary
-  Non Forest Service Lands
-  US Forest Service Lands

Data Sources:
 USFS
 Enterprise Data Warehouse:
 USFS Ownership
 USFS Forest Boundary



0 15 30 60 90
 Miles
 1 inch = 35 miles



Author: M.Bergkamp-Hattis
 USFS Northern Regional Office
 January 2020